



LIGHTSPEED

48-Hour Shipping On Select SKU's

QUICKSHIP

3-Day Shipping On Made To Order Product



LIGHTSPEED

48-Hour Shipping On Select SKU'S

QUICKSHIP

3-Day Shipping On Made To Order Product



PROGRAM DETAILS

LIGHTSPEED

48-Hour Shipping On Select SKU's

QUICKSHIP

3-Day Shipping On Made To Order Product

NO SURCHARGE

FREIGHT TERMS

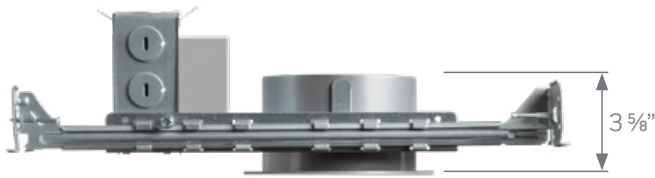
Full freight is allowed on orders shipped within the continental U.S. Totaling \$3,000.00 or more, (excluding O.E.M. Shipments). The full freight allowance for hawaii, alaska and international orders is for orders totaling \$3,800.00 or more.

DOMESTIC ORDERS ONLY

TERMS & CONDITIONS

- LIGHTSPEED and QUICKSHIP items are limited to SKU's within program
- Maximum order quantity of 100 units per SKU
- Consult factory for orders over 100 units
- Products must be entered on a separate QS purchase order to ship within LIGHTSPEED or QUICKSHIP lead times
- Orders containing both LIGHTSPEED and QUICKSHIP items will ship in 3-Days
- Products on mixed PO will ship within longest lead time SKU on order
- Order entry typos or errors will disqualify PO from QuickShip program lead times
- Normal shipping terms & conditions apply

LD 4" Downlighting for Commercial Spaces



Built with simplicity in mind, the LD downlight offers great illumination in up to 1500lm with 2 Step MacAdam binning for excellent color consistency. The LD Non-IC Flat Frame takes up less than 4-inches of plenum space and provides infield adjustment for ceilings up to 1.5-inches thick. LD 4-inch downlight trims provide comfortable wide distribution illumination, 90 CRI and an ultra thin flange.



Ultra Thin
Flange



Wide
Flood



Wet
Location

- Fire Rated, LC housing option
- Ultra thin trims
- Standard 0-10V dimming down to 1%
- Shallow housing for easy integration into tight plenum spaces

>> LIGHTSPEED



4" LD Non-IC Flat Frame

Example: LD4NCL1D101

CATALOG NUMBER	DESCRIPTION
LD4NCL1D101	12W / 1000 lm / 0-10V Dimming 1% / 120V
LD4NCL2D101	16W / 1500 lm / 0-10V Dimming 1% / 120V



4" LC Fire Rated J-Box Housing

Example: LC4L3

CATALOG NUMBER	DESCRIPTION
LC4L3	10W / 850 Lumen Downlight / 120V-277V 0-10V, 120V Phase
LC4L4	12W / 1000 Lumen Downlight / 120V-277V 0-10V, 120V Phase

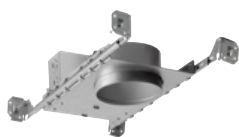


4" LD Downlight Trim

Example: LD4DR308W-SF

CATALOG NUMBER	DESCRIPTION
LD4DR309W-SF	4" LD Downlight / 3000K / 90CRI / White / Self-Flanged
LD4DR359W-SF	4" LD Downlight / 3500K / 90CRI / White / Self-Flanged

>> QUICKSHIP



4" LD Non-IC Flat Frame (Downlight or Wall Wash)

Example: LD4NCL1D101-27

CATALOG NUMBER	DESCRIPTION
LD4NCL1D10127	12W / 1000 lm / 0-10V Dimming 1% / 277V
LD4NCL2D10127	16W / 1500 lm / 0-10V Dimming 1% / 277V



4" LD Downlight Trim

Example: LD4DR308W-SF

CATALOG NUMBER	DESCRIPTION
LD4DR309W-SF	4" LD Downlight / 3000K / 90CRI / White / Self-Flanged
LD4DR359W-SF	4" LD Downlight / 3500K / 90CRI / White / Self-Flanged

SS, Downlights & Cylinders



Balancing energy efficiency and optical control in a cost-effective package, SD offers clean, uniform light in wide distributions. With features such as tight CCT binning and standard 0-10V dimming down to 1%, the SS Series provides everyday options for any commercial application.

- Downlight and Cylinder
- 4" & 6" Round Apertures
- 1000 - 2000 Lumens
- Clear & Haze Reflectors with 50° Cutoff

>> LIGHTSPEED



4" SD Downlight

Example: SS4G4DRL1

CATALOG NUMBER
SS4G4DRL2308
SS4G4DRL3358

DESCRIPTION

13W / 1500lm / 3000K / 80CRI / New Construction / 0-10V / 120V
17W / 2000lm / 3000K / 80CRI / New Construction / 0-10V / 120V



4" SD Downlight Reflector

CATALOG NUMBER
IC430C-SF
IC430HZ-SF

DESCRIPTION

Specular Clear Reflector / Self Flanged
Haze Reflector / Self Flanged



4" SD Lensed Downlight Reflector

CATALOG NUMBER
IC432C-SF-CR

DESCRIPTION

Specular Clear Reflector with Clear Tempered Lens / Self Flanged

Bar Hangers

CATALOG NUMBER
I100
I200
I400

DESCRIPTION

C-Channel Bar (pair)
Flat Bar (pair)
Architectural Bar (pair)

>> QUICKSHIP

**4" SS Downlight**

Example: SS4G4DRL1

CATALOG NUMBER	DESCRIPTION
SS4G4DRL1	9W / 1000lm / New Construction Frame-In
SS4G4DRL2	13W / 1500lm / New Construction Frame-In
SS4G4DRL3	17W / 2000lm / New Construction Frame-In
CCT/CRI: 308	3000K / 80 CRI
358	3500K / 80 CRI
DIMMING: blank	0-10V Dimming 1%
VOLTAGE: blank	120V
OPTIONS: EM7	7W Emergency Remote Backup (50pc Max Order Quantity)

**4" SS Downlight Reflector**

CATALOG NUMBER	DESCRIPTION
IC430C-SF	Specular Clear Reflector / Self Flanged
IC430HZ-SF	Haze Reflector / Self Flanged

**4" SS Lensed Downlight Reflector**

CATALOG NUMBER	DESCRIPTION
IC432C-SF-CR	Specular Clear Reflector with Clear Tempered Lens / Self Flanged
IC432HZ-SF-CR	Haze Reflector with Clear Tempered Lens / Self Flanged

Bar Hangers

CATALOG NUMBER	DESCRIPTION
I100	C-Channel Bar (pair)
I200	Flat Bar (pair)
I400	Architectural Bar (pair)

>> LIGHTSPEED

**6" SD Downlight**

Example: SS6G4DRL1

CATALOG NUMBER	DESCRIPTION
SS6G4DRL2308	13W / 1500lm / 3000K / 80CRI / New Construction / 0-10V / 120V
SS6G4DRL3358	17W / 2000lm / 3000K / 80CRI / New Construction / 0-10V / 120V

**6" SD Open Reflector**

CATALOG NUMBER	DESCRIPTION
IC630C-SF	Specular Clear Reflector / Self Flanged
IC630HZ-SF	Haze Reflector / Self Flanged

**6" SD Lensed Reflector**

CATALOG NUMBER	DESCRIPTION
IC632C-SF-CR	Specular Clear Reflector with Clear Tempered Lens / Self Flanged

Bar Hangers

CATALOG NUMBER	DESCRIPTION
I100	C-Channel Bar (pair)
I200	Flat Bar (pair)
I400	Architectural Bar (pair)

>> QUICKSHIP

**6" SS Downlight**

Example: SS6G4DRL1

CATALOG NUMBER	DESCRIPTION
SS6G4DRL1	9W / 1000lm / New Construction Frame-In
SS6G4DRL2	13W / 1500lm / New Construction Frame-In
SS6G4DRL3	17W / 2000lm / New Construction Frame-In

CCT/CRI:	308	3000K / 80 CRI
	358	3500K / 80 CRI
DIMMING:	blank	0-10V Dimming 1%
VOLTAGE:	blank	120V
OPTIONS:	EM7	7W Emergency Remote Backup (50pc Max Order Quantity)

**6" SS Open Reflector**

CATALOG NUMBER	DESCRIPTION
IC630C-SF	Specular Clear Reflector / Self Flanged
IC630HZ-SF	Haze Reflector / Self Flanged

**6" SS Lensed Reflector**

CATALOG NUMBER	DESCRIPTION
IC632C-SF-CR	Specular Clear Reflector with Clear Tempered Lens / Self Flanged

Bar Hangers

CATALOG NUMBER	DESCRIPTION
I100	C-Channel Bar (pair)
I200	Flat Bar (pair)
I400	Architectural Bar (pair)



SD, Downlights & Cylinders

Balancing energy efficiency and optical control in a cost-effective package, SD offers clean, uniform light in 3 distinct distributions. With features such as 2 Step MacAdam binning and standard 0-10V dimming down to 1%, the SD Series provides everyday options for any commercial application. Building on the success of our award-winning SS Series, a new SD family delivers additional features in the simple to specify platform.

- Downlight and Cylinder
- 4" & 6" Round Apertures
- 1000 - 4,000 Lumens
- 2 Step MacAdam (2 SDCM)
- Clear & Haze Reflectors with 50° Cutoff

Distribution



30°
Narrow Flood



50°
Flood



70°
Wide Flood

>> QUICKSHIP

**4" SD Downlight**

Example: SD4DRL130-NF

CATALOG NUMBER	DESCRIPTION
SD4DRL1	10W / 1000lm / New Construction Frame-In
SD4DRL2	14W / 1500lm / New Construction Frame-In
SD4DRL3	19W / 2000lm / New Construction Frame-In
SD4DRL4	23W / 2500lm / New Construction Frame-In
SD4DRL5	28W / 3000lm / New Construction Frame-In
CCT/CRI:	
30	3000K / 80 CRI
35	3500K / 80 CRI
DIMMING:	
-D101	0-10V Dimming 1%
VOLTAGE:	
(blank)	120V
27	277V
OPTIC:	
-NF	30° Narrow Flood
-FL	50° Flood
-WF	70° Wide Flood
OPTIONS:	
EM7	7W Emergency Remote Backup (50pc Max Order Quantity)

**4" SD Downlight Reflector**

CATALOG NUMBER	DESCRIPTION
IC430C-SF	Specular Clear Reflector / Self Flanged
IC430HZ-SF	Haze Reflector / Self Flanged

**4" SD Lensed Downlight Reflector**

CATALOG NUMBER	DESCRIPTION
IC432C-SF-CR	Specular Clear Reflector with Clear Tempered Lens / Self Flanged
IC432HZ-SF-CR	Haze Reflector with Clear Tempered Lens / Self Flanged

Bar Hangers

CATALOG NUMBER	DESCRIPTION
I100	C-Channel Bar (pair)
I200	Flat Bar (pair)
I400	Architectural Bar (pair)

>> QUICKSHIP

**4" SC Cylinder**

Example: SC4DRL130-D101-NF-WC-S

	CATALOG NUMBER	DESCRIPTION
	SC4DRL1	SD Cylinder / 9W / 1000lm
	SC4DRL2	SD Cylinder / 13W / 1500lm
	SC4DRL3	SD Cylinder / 18W / 2000lm
	SC4DRL4	SD Cylinder / 22W / 2500lm
	SC4DRL5	SD Cylinder / 26W / 3000lm
CCT/CRI:	30	3000K / 80 CRI
	35	3500K / 80 CRI
DIMMING:	-D101	Osram 0-10V Dimming 1%
VOLTAGE:	(blank)	Universal 120V/277V
OPTIC:	-NF	30° Narrow Flood
	-FL	50° Flood
	-WF	70° Wide Flood
CYLINDER FINISH:	-W	White Cylinder
	-B	Black Cylinder
REFLECTOR FINISH:	C	Clear Reflector
	HZ	Haze Reflector
MOUNTING:	-C144	144" Aircraft Cable
	-S	Surface Mount

>> QUICKSHIP

**6" SD Downlight**

Example: SD6DRL127-D101-NF

CATALOG NUMBER	DESCRIPTION
SD6DRL1	10W / 1000lm / Downlight
SD6DRL2	14W / 1500lm / Downlight
SD6DRL3	19W / 2000lm / Downlight
SD6DRL4	23W / 2500lm / Downlight
SD6DRL5	28W / 3000lm / Downlight
SD6DRL6	33W / 3500lm / Downlight
SD6DRL7	38W / 4000lm / Downlight
CCT/CRI:	
30	3000K / 80 CRI
35	3500K / 80 CRI
DIMMING:	
-D101	0-10V Dimming 1%
VOLTAGE:	
(blank)	120V
27	277V
OPTIC:	
-NF	30° Narrow Flood
-FL	50° Flood
-WF	70° Wide Flood
OPTIONS:	
EM7	7W Emergency Remote Backup (50pc Max Order Quantity)

**6" SD Open Reflector**

CATALOG NUMBER	DESCRIPTION
IC630C-SF	Specular Clear Reflector / Self Flanged
IC630HZ-SF	Haze Reflector / Self Flanged

**6" SD Lensed Reflector**

CATALOG NUMBER	DESCRIPTION
IC632C-SF-CR	Specular Clear Reflector with Clear Tempered Lens / Self Flanged
IC632HZ-SF-CR	Haze Reflector with Clear Tempered Lens / Self Flanged

Bar Hangers

CATALOG NUMBER	DESCRIPTION
I100	C-Channel Bar (pair)
I200	Flat Bar (pair)
I400	Architectural Bar (pair)

>> QUICKSHIP

**6" SD Cylinder**

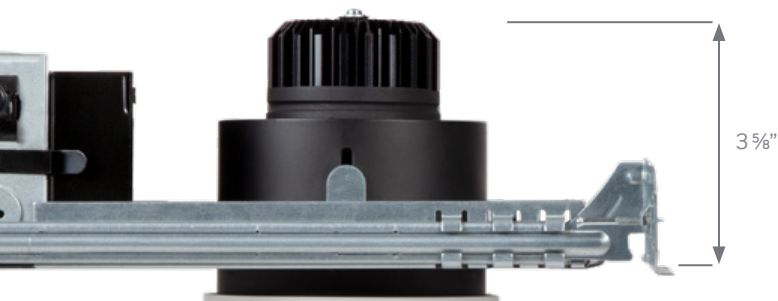
Example: SC6DRL1309-DIM-NF-WW-C144

	CATALOG NUMBER	DESCRIPTION
	SC6DRL1	SD Cylinder / 9W / 1000lm
	SC6DRL2	SD Cylinder / 13W / 1500lm
	SC6DRL3	SD Cylinder / 18W / 2000lm
	SC6DRL4	SD Cylinder / 22W / 2500lm
	SC6DRL5	SD Cylinder / 26W / 3000lm
	SC6DRL6	SD Cylinder / 32W / 3500lm
CCT/CRI:	30	3000K / 80 CRI
	35	3500K / 80 CRI
DIMMING:	-D101	Osram 0-10V Dimming 1%
VOLTAGE:	(blank)	Universal 120V/277V
OPTIC:	-NF	30° Narrow Flood
	-FL	50° Flood
	-WF	70° Wide Flood
CYLINDER FINISH:	-W	White Cylinder
	-B	Black Cylinder
REFLECTOR FINISH:	C	Clear Reflector
	HZ	Haze Reflector
MOUNTING:	-C144	144" Aircraft Cable
	-S	Surface Mount

Visit www.intenselighting.com
For Latest Specifications

Consult Factory For Alternate
Dimming Adders

3.5" MX G2 Naked Non-IC Downlight



The MXG2 downlight is now available with a flat frame style IC housing that adds infield adjustment from 1/2-inch to 1 1/4-inch. This simplified option affords excellent value with no compromise in performance or below ceiling anesthetics.

- High performance 12° to 50° optics
- Up to 1850 lumens with 92 CRI
- Architectural grade die-cast aluminum trims
- Infield adjustable collar from 1/2" to 1-1/4"

>> QUICKSHIP



3.5" MX G2 Non-IC Naked New Construction Flat Frame

Example: MXFGDRTR-NCL0

	CATALOG NUMBER	DESCRIPTION
	MXFG2DRTR-NCL0	10W / Non-IC New Construction Flat Frame
	MXFG2DRTR-NCL1	16W / Non-IC New Construction Flat Frame
	MXFG2DRTR-NCL2	20W / Non-IC New Construction Flat Frame
	MXFG2DRTR-NCL3	26W / Non-IC New Construction Flat Frame
DIMMING:	-D101	0-10V Dimming 1%
VOLTAGE:	(blank) 27	120V 277V
OPTIONS:	EM7	7W Emergency Backup (50pc Max Order Quantity)



3.5" MX G2 1-1/2" Regress Downlight Open Trim

Example: MXTFG2-RTRD300W-SFL02712

	CATALOG NUMBER	DESCRIPTION
	MXTFG2-RTRD300W-SF	White Downlight / Self Flanged
WATTAGE:	L0	10W / 950lm
	L1	16W / 1300lm
	L2	20W / 1550lm
	L3	26W / 1850lm
CCT/CRI:	279	2700K / 92 CRI
	30	3000K / 82 CRI
	309	3000K / 92 CRI
	35	3500K / 82 CRI
OPTIC:	12	12° Spot
	24	24° Narrow Flood
	36	36° Flood
	50	50° Wide Flood

>> QUICKSHIP

**3.5" MX G2 Square Non-IC Naked New Construction Flat Frame**

Example: MXFG2DSTR-NCL0

	CATALOG NUMBER	DESCRIPTION
	MXFG2DSTR-NCL0	10W / Non-IC New Construction Flat Frame
	MXFG2DSTR-NCL1	16W / Non-IC New Construction Flat Frame
	MXFG2DSTR-NCL2	20W / Non-IC New Construction Flat Frame
	MXFG2DSTR-NCL3	26W / Non-IC New Construction Flat Frame
DIMMING:	-D101	0-10V Dimming 1%
VOLTAGE:	(blank)	120V
	27	277V
OPTIONS:	EM7	7W Emergency Backup (50pc Max Order Quantity)

**3.5" MX G2 Square 1-1/2" Regress Downlight Open or Lensed Trim**

Example: MXTFG2-STRD300W-SFL02712

	CATALOG NUMBER	DESCRIPTION
	MXTFG2-STRD300W-SF	White Square Downlight / Self Flanged
WATTAGE:	L0	10W / 950lm
	L1	16W / 1300lm
	L2	20W / 1550lm
	L3	26W / 1850lm
CCT/CRI:	279	2700K / 92 CRI
	30	3000K / 82 CRI
	309	3000K / 92 CRI
	35	3500K / 82 CRI
OPTIC:	12	12° Spot
	24	24° Narrow Flood
	36	36° Flood
	50	50° Wide Flood

3.5" MX G2 Adjustable



The MX family allows for uniform and consistent lighting throughout an entire space making it the ideal product line for many applications including retail, commercial, hospitality and residential. This diverse line delivers smooth, beautiful illumination and impressive performance that delivers up to 1850lm.

Performance TIR Optics

High performance 12° to 50° optics producing up to 24,500 CBCP

Specification Grade Trims

Featuring a die-cast aluminum trim which provides an elegant specification grade look.

>> QUICKSHIP



3.5" MX G2 Adjustable

Example: MXG2ARTR-NCL0

CATALOG NUMBER	DESCRIPTION
MXG2ARTR-NC	Non-IC New Construction Housing
CEILING THICKNESS:	(blank) 5/8" Ceiling Thickness
WATTAGE:	L0 10W L1 16W L2 20W L3 26W
DIMMING:	-D101 0-10V Dimming 1%
VOLTAGE:	(blank) 120V 27 277V
OPTIONS:	-EM7 7W Emergency Backup (50pc Max Order Quantity)



3.5" MX G2 1" Regress Accent Trim

Example: MXTG2-RTRA300W-SFL02712

CATALOG NUMBER	DESCRIPTION
MXTG2-RTRA300W-SF	White Accent / Self Flanged
WATTAGE:	L0 10W / 950lm L1 16W / 1300lm L2 20W / 1550lm L3 26W / 1850lm
CCT/CRI:	279 2700K / 92 CRI 30 3000K / 82 CRI 309 3000K / 92 CRI 35 3500K / 82 CRI
OPTIC:	12 12° Spot 24 24° Narrow Flood 36 36° Flood 50 50° Wide Flood

Bar Hangers

CATALOG NUMBER	DESCRIPTION
I100	C-Channel Bar Hangers (Pair)
I200	Flat Bar Hangers (Pair)

>> QUICKSHIP

**3.5" MX G2 Square Adjustable**

Example: MXG2ARTR-NCLO

	CATALOG NUMBER	DESCRIPTION
	MXG2ASTR-NC	Non-IC New Construction Housing
CEILING THICKNESS:	(blank)	5/8" Ceiling Thickness
WATTAGE:	L0	10W
	L1	16W
	L2	20W
	L3	26W
DIMMING:	(blank)	Non-Dimming
	-D101	0-10V Dimming 1%
VOLTAGE:	(blank)	120V
	27	277V
OPTIONS:	-EM7	7W Emergency Backup (50pc Max Order Quantity)

**3.5" MX G2 1" Regress Square Accent Trim**

Example: MXTG2-RTRA300W-SFL02712

	CATALOG NUMBER	DESCRIPTION
	MXTG2-STRA300W-SF	White Accent / Self Flanged
WATTAGE:	L0	10W / 950lm
	L1	16W / 1300lm
	L2	20W / 1550lm
	L3	26W / 1850lm
CCT/CRI:	279	2700K / 92 CRI
	30	3000K / 82 CRI
	309	3000K / 92 CRI
	35	3500K / 82 CRI
OPTIC:	12	12° Spot
	24	24° Narrow Flood
	36	36° Flood
	50	50° Wide Flood

Bar Hangers

CATALOG NUMBER	DESCRIPTION
I100	C-Channel Bar Hangers (Pair)
I200	Flat Bar Hangers (Pair)

Intense Lighting
725 Landwehr Road
Northbrook, IL 60062

T. 714.630.9877
F. 847.559.5505

www.intenselighting.com

A Leviton Company
www.leviton.com

Printed in the U.S.A
© Copyright 2021. Intense Lighting. All Rights Reserved.

Intense Lighting, LLC reserves the right to discontinue products or change the technical specifications of its products at any time without notice. Select products in this catalog have patent protection or patents pending.

INT1024-QS-1