



100% Intensity
3000K

Lowest Dim Level
1800K

WD

Warm Dim

Natural illumination to enhance
your space



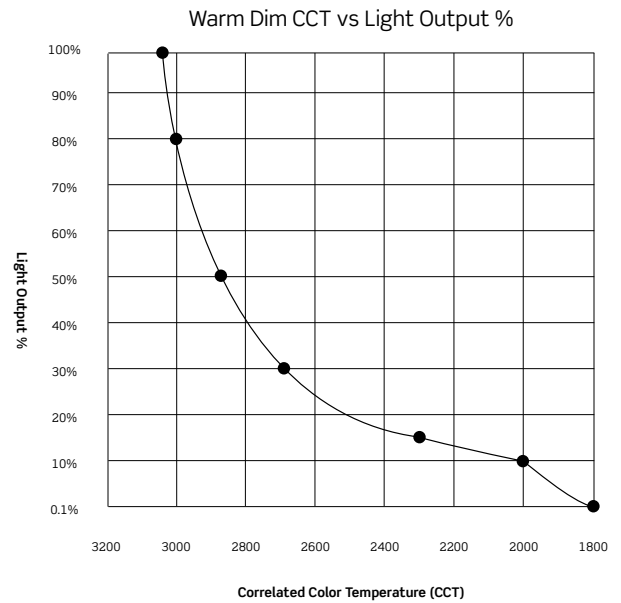
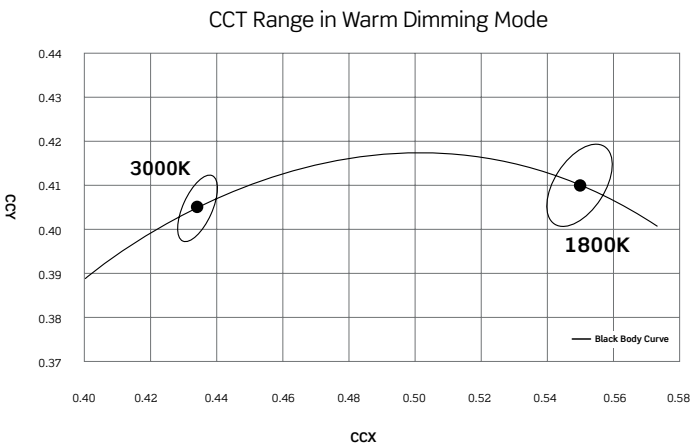
Warm Dim

Key Features

- Dimming profile that warms as it dims
- 3000K at 100% down to 1800K at Lower dim levels
- Compatible with 0-10V, phase and Lutron dimming protocols
- 90+ CRI throughout entire CCT range

Why Warm Dim

Warm Dimming allows users to enjoy the same warm glow aesthetic that traditional light sources offer while providing the modern performance and flexibility of LED's. Warm Dim offers the ability to gradually transition the light emitted from 3000K at full intensity to 1800K at lowest dim.



Availability

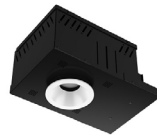
Available with the following Product Families:



Gravity

Downlight | Adjustable | Wall Wash
Shallow | Remodel | Cylinder

- ☼ 1900-2900 Lumen Range
- Ⓐ 20° 30° 40° 50° Field Changeable Optic
- Ⓜ EM Option



MX

Downlight | Adjustable | Wall Wash
Pendant | Track

- ☼ 900-1150 Lumen Range
- Ⓐ 24° 30° 45° Field Changeable Optic



SS

4 & 6-inch Downlight
4 & 6-inch Cylinder

- ☼ 1000-1500 Lumen Range
- Ⓜ EM Option