

Gravity[™] 2-Inch

High Performance Architectural
Downlight & Cylinders



Gravity™ | Small Size, Big Specs

Working with two-Inch architectural downlighting has never been easy...until now. Meet the two-Inch Gravity. It has power, adjustability and looks to match. A minimalist 1mm specification grade reflector is paired up with a deep-seated light engine that is capable of producing 1,500 lumens with minimal glare and maximum adjustability.

7°
30,000
CBCP

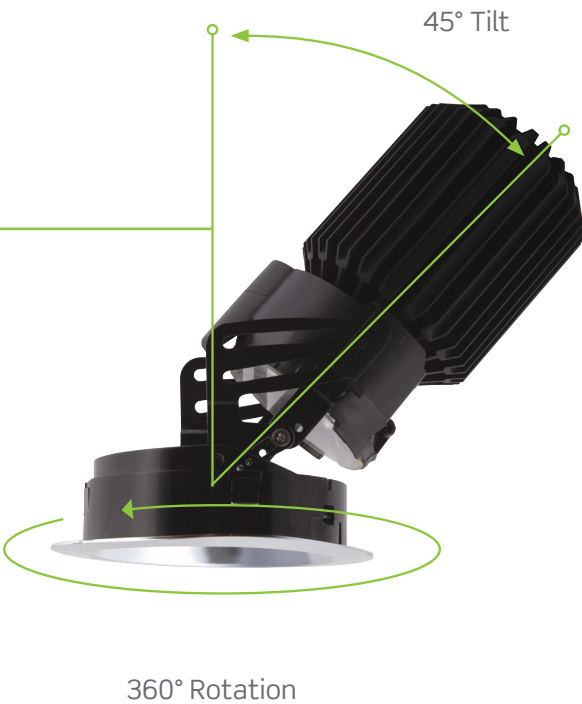
Industry First Fold Frame

The Gravity™ 2-inch Fold Frame is designed to take complexity out of below ceiling installations



Class Leading 45° Tilt

Full 360° Rotation & 45° Tilt for those hard to reach areas



Adjustable Collar Heights

Features In-Field Adjustment with no loss in performance



1/2 Inch Ceiling

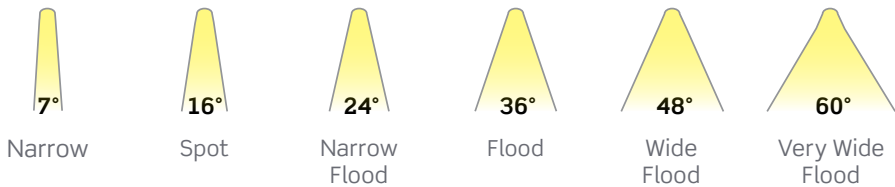


1-1/4 Inch Ceiling



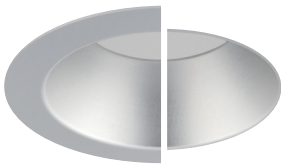
Award Winning 7°

Wide selection of field changeable optics. With a narrow spot beam delivering over 30,000 CBCP



Clean, Sleek & Comfortable Trims

Minimalist 1mm specification grade aluminum trims optimized for visual comfort



Trimmed / Trimless



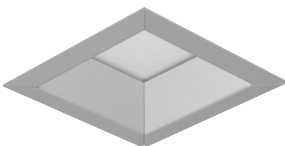
1-inch Deep Cone



5/8-inch Regressed Cone



Round



Square



Round Wall Wash



Square Wall Wash



White



Black



Haze



Wheat

Small Size, Big Specs



Adjustable

Downlight

Wall Wash

Color Reliability

2 SDCM Binning Ensures Color Consistency Across Luminaires



Multiple Control Options



High Performance 2-Inch Architectural Downlighting

The Gravity family of luminaires brings powerful performance to 2-inch downlighting. Featuring downlight, adjustable and wall wash configurations, Gravity 2-inch is versatile enough to meet any lighting application. Designed for below ceiling installation, Gravity 2-inch features an innovative fold frame design and a compact housing. Specification grade trim and optic options ensure precision performance and an elegant finish.

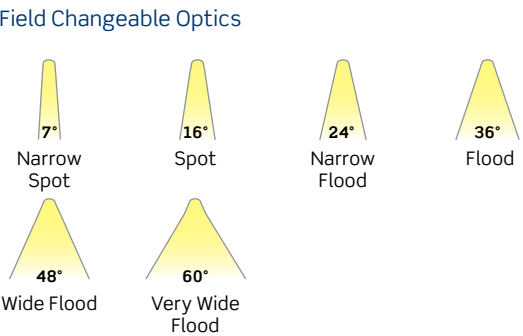
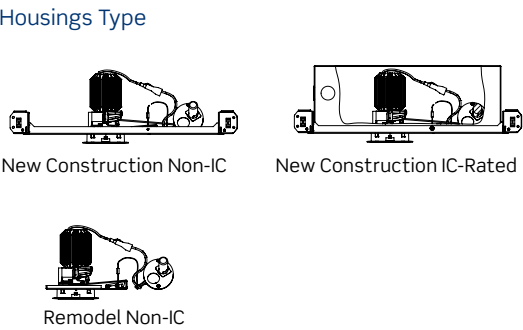
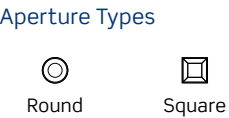
Extreme Flexibility
Toolless adjustability with 360° of rotation & 45° of tilt

Easy Installation
Spring actuated fold frame designed for below ceiling installations

Field Changeable Optics & Accessories
Dedicated high performance 7° narrow spot and interchangeable TIR optics ranging from 16° to 60°

Electrical Data (Nominal Delivered Lumens)

L0	<div><div></div></div>	500lm	7W
L1	<div><div></div></div>	850lm	10W
L2	<div><div></div></div>	1200lm	15W
L3	<div><div></div></div>	1500lm	20W



Gravity™
2-inch Downlights



Gravity™
2-inch Cylinders

High Performance 2-Inch Architectural Cylinders

Designed to complement the new Gravity 2-inch downlight, the Gravity 2-inch cylinders provide architectural illumination in a sleek, elegant housing. Offering high performance and tight beam control in a compact design. Gravity 2-inch cylinders enhance any space.

Sleek Architectural Design

Beautifully constructed 6 & 12-inch extruded aluminum cylinder with specification grade trims in elegant finishes

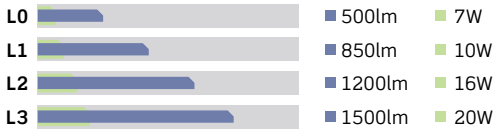
Consistent Family Performance

Utilizes the same trimless trims as the Gravity 2-inch downlight

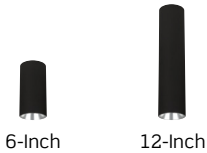
Field Changeable Optics & Accessories

Dedicated high performance 7° Narrow Spot and interchangeable TIR optics ranging from 16° to 60°

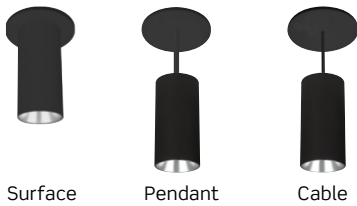
Electrical Data (Nominal Delivered Lumens)



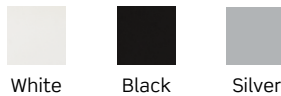
Height Options



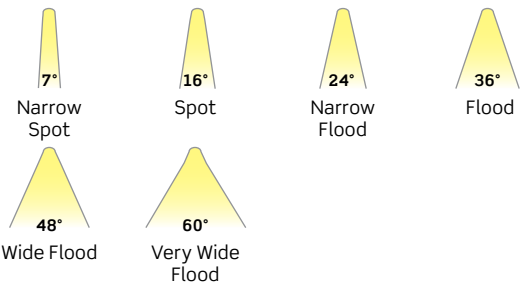
Mounting Options



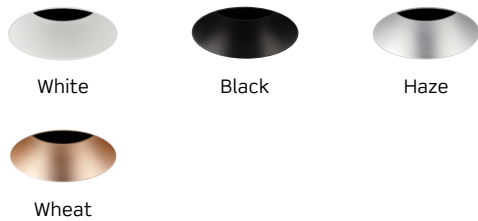
Cylinder Finishes



Field Changeable Optics



Trim Finishes



Intense Lighting

3340 E. La Palma Ave.
Anaheim, CA 92806

tel 714 630-9877

fax 714 630-9883

info@intenselighting.com
www.intenselighting.com

A Leviton Company

www.leviton.com

Printed in the U.S.A
©2018. Intense Lighting, LLC. All Rights Reserved.

INT0319-GR2-1