

Installation Instructions

For use with D100 4" Downlight & D150 6" Downlight

IS-R1094-R1

1 of 2

⚠ WARNING

Risk of electrical shock. Disconnect power before servicing or installing luminaire.

⚠ WARNING

Risk of injury or damage. Luminaire will fail if not installed properly. Follow installation instructions.

⚠ WARNING

Risk of injury. Wear safety glasses and gloves during installation and servicing. Allow ample time to cool before handling.

IMPORTANT SAFETY INSTRUCTIONS

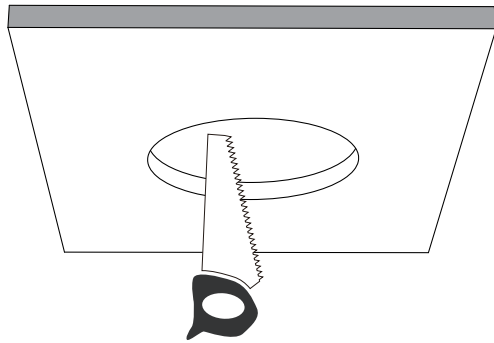
- Read all installation instructions before installing. It is important to save these instructions.
- Only install and connect LED module with power disconnected at the circuit breaker. Hot plugging, or connecting the module with power on, could damage the LEDs and is not covered by warranty.
- Observe and follow all label information and instructions regarding dry, damp and wet location listings, proper Intense LED module, warnings of installation near combustible materials and/or insulation.
- Be sure to connect ground wire to prevent electric shock or other potential hazards.
- The product must be installed in a manner consistent with the intended use and in compliance with the national electrical codes and local codes by a person familiar with the construction and operation of the product and the hazards involved.
- **WARNING:** Use only Intense Lighting trims listed for use with this fixture. Use of trims other than those listed by Intense Lighting is a violation of N.E.C 110-3(B) and voids all warranties.

Ceiling Cutout:

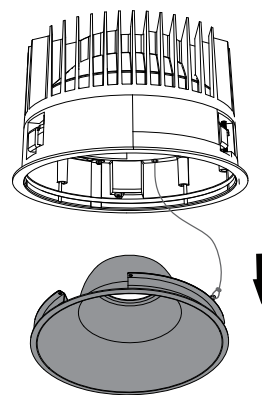
Ceiling cutout D100: 3-15/16" (100mm)

Ceiling cutout D150: 5-7/8" (150mm)

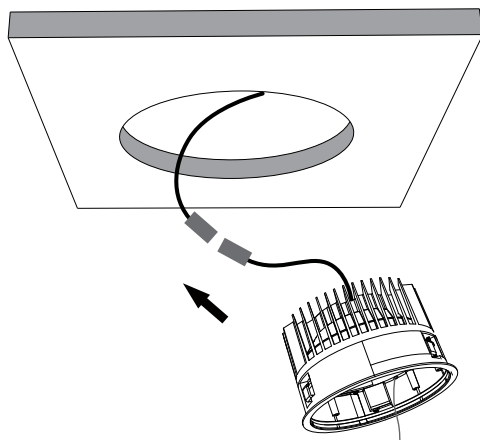
Note: Fixture can accommodate a max ceiling thickness of 15/16" (25mm)



Remove Trim:

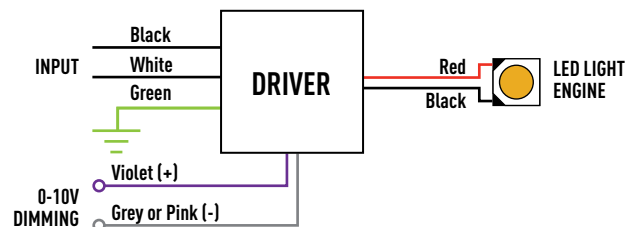


Install Driver:



ELECTRICAL CONNECTIONS:

1. Make electrical connections through desired knockout for conduit or Romex® cable. Use only UL listed connectors.
2. Connect black wire from fixture to black (HOT) supply wire, white wire from fixture to white (NEUTRAL) supply wire and connect the ground from fixture to green (GROUND) supply wire. Use UL listed connectors or wire nuts to make the connections (provided by others). Connect dimming wires if applicable.
3. Close and lock junction box door ensuring all wire connections and wire are contained within.



INSTRUCTIONS L/M-08222022 P-1

INTENSE LIGHTING | 3340 E La Palma Ave, Anaheim, CA 92806 | tel 714 630-9877 | fax 714 630-9883

For Intense Lighting's limited product warranty, go to www.intenselighting.com. For a printed copy of the warranty, you may call 800 961-5321.

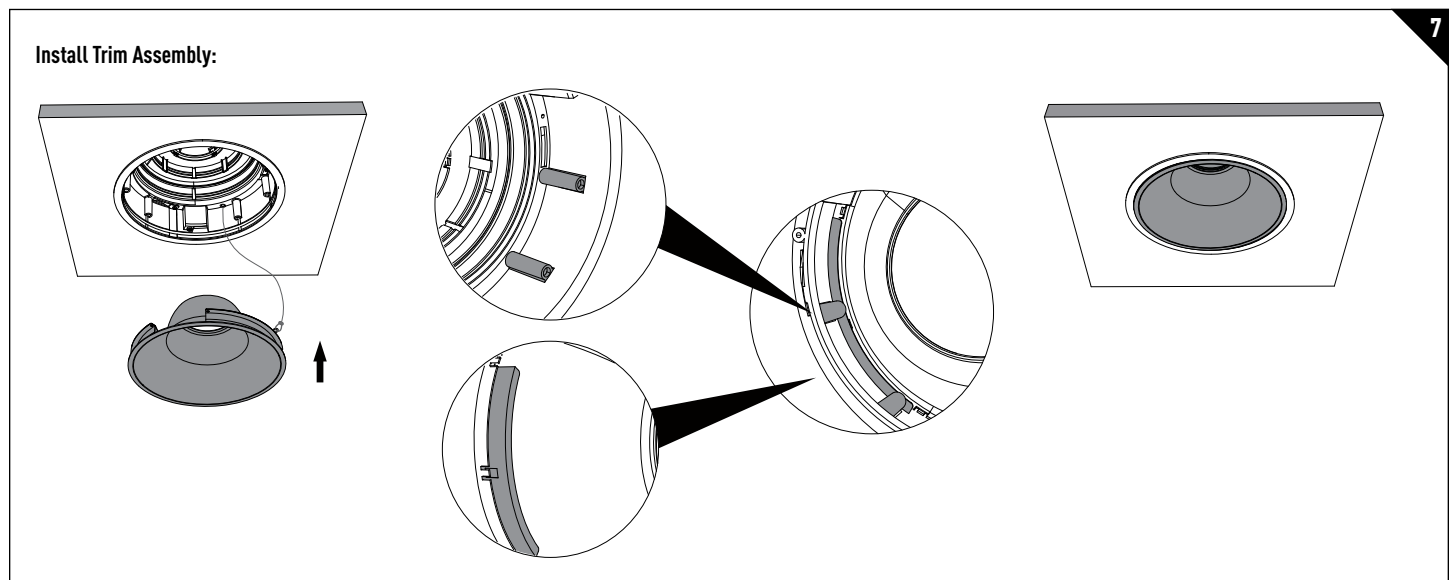
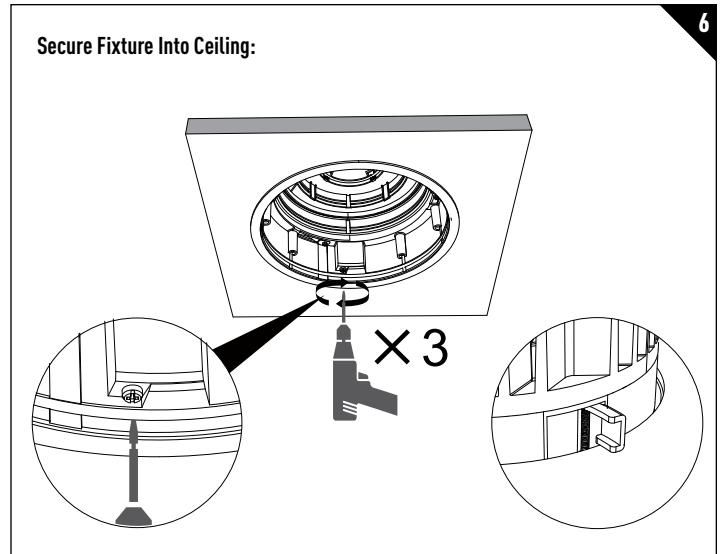
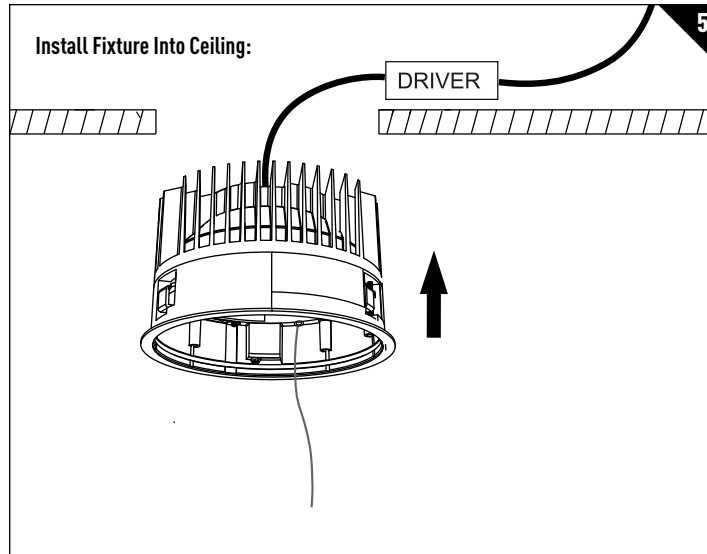
© 2022 Intense Lighting, LLC. All rights reserved. Note: This document is subject to change without notice.

Installation Instructions

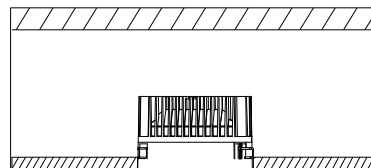
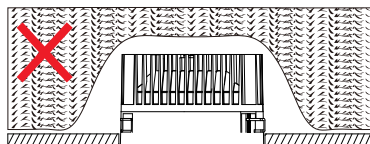
For use with D100 4" Downlight & D150 6" Downlight

IS-R1094-R1

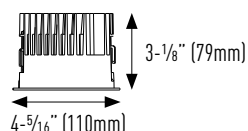
2 of 2



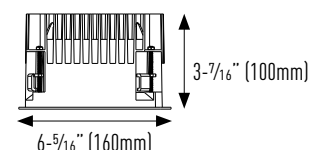
**NO THERMAL INSULATION
ALLOWED**



D100



D150



INSTRUCTIONS I/M-08222022 P-2

INTENSE LIGHTING | 3340 E La Palma Ave, Anaheim, CA 92806 | tel 714 630-9877 | fax 714 630-9883

For Intense Lighting's limited product warranty, go to www.intenselightning.com. For a printed copy of the warranty, you may call 800 961-5321.

© 2022 Intense Lighting, LLC. All rights reserved. Note: This document is subject to change without notice.

intense LIGHTING | a **LEVITON** company