

LD4 / LCT4A

4" LD Adjustable - Non-IC Flat Frame

JOB NAME		CATALOG NUMBER	
NOTES		TYPE	

ELECTRICAL DATA

LED Light Engine	System Wattage *	CCT / CRI	Nominal Delivered Lumens **
L05	5W	3000K / 90 CRI	400lm
L0	9W	3000K / 90 CRI	750lm
L1	11W	3000K / 90 CRI	1000lm
L2	17W	3000K / 90 CRI	1500lm

*System Wattage includes driver & LED Module consumption / **Delivered Lumen output will vary depending on CCT, CRI & finish

FEATURES

- Lutron and enhanced 0-10V dimming options
- Single housing design accepts both round and square trims

LED LIGHT ENGINE

- 90 CRI in 2700K, 3000K or 3500K
- 2 SDCM (2-Step MacAdam)
- 50,000 hours L70 (rated life at 70% output)

OPTICS

- 26° Narrow Flood and 45° Flood

ELECTRICAL SYSTEM

- Dedicated voltage options of 120V or 277V. Must be specified in catalog code
- This product complies with IEEE C62.41 for surge endurance up to 2.5KV
- Additional surge protection recommended
- Damage from power surge is not covered by warranty

HOUSING

- 16 & 18 gauge galvanized steel construction
- UL 1598 listed for damp locations

DIMMING

- Forward/reverse phase dimming (120V only)
- 0-10V 1% Dimming
- EdoLED SOLOdrive 0-10V 0.1%
- EdoLED ECOdrive 0-10V 1%
- Lutron® LDE1 Hi-Lume 1% EcoSystem LED driver with Soft-on, Fade-to-Black dimming technology
- Lutron® LTEA2W Hi-Lume 1% 2-Wire LED driver (120V forward phase only)

TRIM ASSEMBLY

- Powder coated aluminum die-cast trim
- Quick connect for easy installation
- LED is protected by integral glass lens
- 365° horizontal rotation and 30° vertical adjustment
- Damp location listed

INSTALLATION

- Non-IC; insulation should be kept minimum 3" away from all sides of fixture
- Fixture includes adjustable bar hangers (14"-24") for wood joist or t-bar ceiling installations
- Accommodates ceilings with a 1/2" to 1-1/2" thickness
- Maximum ambient temperature 35°C (95°F)

EMERGENCY

- EM option mounted nearby the fixture above ceiling
- [IOTA PCB diagram](#)
[IOTA ILB-CP instruction Manual](#)

LISTING

- 5-Year Intense LED Limited Warranty
- Trim Assembly: ETL listed to US & Canadian standards for wet location
- ENERGY STAR® Qualified (White reflectors only; Excludes: 2700K/90CRI, eldoLED & Lutron® options)



Ceiling Cut Out: 4-1/2" / Max. Ceiling Thickness: 1 1/2"

Frame-In Part Number (Example: LD4NCL0DIM)

Frame-In	Type	Wattage	Dimming	Voltage	Options
LD4 (LD 4" Flat Frame)	NC (New Construction Non-IC)	L05 ¹ (5W)	DIM ² (Phase Dimming 5%)	blank (120V)	EM7 ³ 7W EM Backup
		L0 (9W)	D101 (0-10V Dimming 1%)	27 (277V)	
		L1 (11W)	ED10V1 (eldoLED 0-10V 1%)		
		L2 (17W)	ED10V01 (eldoLED 0-10V 0.1%)		
			LUT (Lutron® LDE1 EcoSystem 1%)		
		LUT2 ² (Lutron® LTEA2W 2-Wire 1%)			

Trim Assembly Part Number (Example: LCT4ARTW-SF309-NF)

Trim	Finish	CCT/CRI	Optic
LCT4ART (4" Adjustable Round)	W-SF (White / Self-Flanged)	279 (2700K/90 CRI)	-NF (26° Narrow Flood)
		309 (3000K/90 CRI)	-FL (45° Flood)
		359 (3500K/90 CRI)	

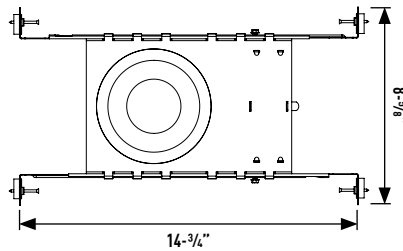
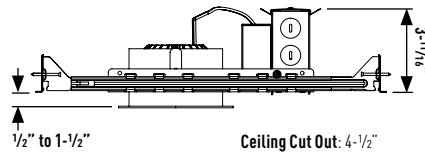
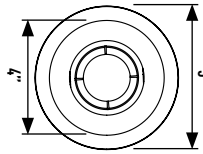
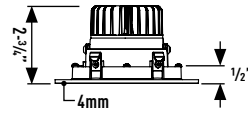
Note:

1. L05 available w/ DIM only
2. Available in 120V only
3. EM7 not available w/ L05
4. Available in Round Only

LD4 / LCT4A

4" LD Adjustable - Non-IC Flat Frame

JOB NAME		CATALOG NUMBER	
NOTES		TYPE	



0-10V DIMMING ELECTRICAL TABLE*

Lumen Package	Voltage	Wattage	VA	Input Current	Power Factor
L05	120V	-	-	-	-
	277V	-	-	-	-
L0	120V	9.2W	9.85	0.08	0.93
	277V	10.28W	13.79	0.05	0.75
L1	120V	11.46W	11.90	0.10	0.96
	277V	12.59W	16.43	0.06	0.77
L2	120V	16.95W	17.36	0.14	0.98
	277V	18.28W	20.99	0.08	0.87

*Driver performance can fluctuate +/- 3% from measured date

PHASE DIMMING ELECTRICAL TABLE*

Lumen Package	Voltage	Wattage	VA	Input Current	Power Factor
L05	120V	5.07W	5.16	0.04	0.98
	277V	-	-	-	-
L0	120V	7.87W	7.92	0.07	0.99
	277V	9.32W	10.48	0.04	0.89
L1	120V	10.74W	10.81	0.09	0.99
	277V	11.9W	12.9	0.05	0.92
L2	120V	16.93W	17.26	0.14	0.98
	277V	17.77W	19.15	0.07	0.93

*Driver performance can fluctuate +/- 3% from measured date

LD4 / LCT4A

4" LD Adjustable - Non-IC Flat Frame

JOB NAME		CATALOG NUMBER	
NOTES		TYPE	

LD4L2/ LCT4ARTW-SF309

Report #: ILL-20180227-3.001

Watts: 8
Lumens: 651
LPW: 86
CCT: 3000K

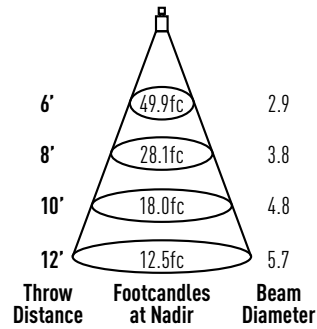
CCT / CRI Multipliers:

2700K / 90 CRI (x 0.93)
3000K / 90 CRI (x 1.00)
3500K / 90 CRI (x 1.00)

Candelas at Nadir

Degree	CBCP
0°	1796
5°	1663
15°	746
25°	315
35°	206
45°	16

26° Distribution



LD4L3/ LCT4ARTW-SF309

Report #: ILL-20180227-3.002

Watts: 10
Lumens: 923
LPW: 91
CCT: 3000K

CCT / CRI Multipliers:

2700K / 90 CRI (x 0.93)
3000K / 90 CRI (x 1.00)
3500K / 90 CRI (x 1.00)

Candelas at Nadir

Degree	CBCP
0°	2547
5°	2357
15°	1058
25°	447
35°	262
45°	23

26° Distribution

