

# LD4 / LD4D-DG

4" LD Downlight w/ Drop Lens - Non-IC Flat Frame

JOB NAME		CATALOG NUMBER	
NOTES		TYPE	

## ELECTRICAL DATA

LED Light Engine	System Wattage *	CCT / CRI	Nominal Delivered Lumens **	
			Round	Square
L05	5W	3000K / 90 CRI	400lm	350lm
L0	9W	3000K / 90 CRI	750lm	600lm
L1	11W	3000K / 90 CRI	1000lm	850lm
L2	17W	3000K / 90 CRI	1500lm	1250lm

\*System Wattage includes driver & LED Module consumption / \*\*Delivered Lumen output will vary depending on CCT, CRI & finish

## FEATURES

- Lutron and enhanced 0-10V dimming options
- Single housing design accepts both round and square trims

## LED LIGHT ENGINE

- 90 CRI in 2700K, 3000K, 3500K or 4000K
- 2 SDCM (2-Step MacAdam)
- 50,000 hours L70 (rated life at 70% output)

## ELECTRICAL SYSTEM

- Dedicated voltage options of 120V or 277V. Must be specified in catalog code
- This product complies with IEEE C62.41 for surge endurance up to 2.5KV
- Additional surge protection recommended
- Damage from power surge is not covered by warranty

## HOUSING

- 16 & 18 gauge galvanized steel construction
- UL 1598 listed for damp locations

## DIMMING

- Forward/reverse phase dimming (120V only)
- 0-10V 1% Dimming
- EldoLED SOL0drive 0-10V 0.1%
- EldoLED ECOdrive 0-10V 1%
- Lutron® LDE1 Hi-Lume 1% EcoSystem LED driver with Soft-on, Fade-to-Black dimming technology

## TRIM ASSEMBLY

- Die-cast trim and heat sink assembly with quick connect for easy installation.
- High optical transparency diffusion lens
- Wet location listed

## INSTALLATION

- Non-IC; insulation should be kept minimum 3" away from all sides of fixture
- Fixture includes adjustable bar hangers (14"-24") for wood joist or t-bar ceiling installations
- Accommodates ceilings with a 1/2" to 1-1/2" thickness
- Maximum ambient temperature 35°C (95°F)

## EMERGENCY

- EM option mounted nearby the fixture above ceiling

[IOTA PCB diagram](#)  
[IOTA ILB-CP instruction Manual](#)

## LISTING

- Trim Assembly: ETL listed to US and Canadian standards for wet location
- 5-Year Intense LED Limited Warranty



Ceiling Cut Out: 4-1/2" / Max. Ceiling Thickness: 1 1/2"

## Frame-In Part Number (Example: LD4NCL0DIM)

Frame-In	Type	Wattage	Dimming	Voltage	Options
LD4 (LD 4" Flat Frame)	NC (New Construction Non-IC)	L05 <sup>1</sup> (5W)	DIM <sup>2</sup> (Phase Dimming 5%)	blank (120V)	EM7 <sup>3</sup> 7W EM Backup
		L0 (9W)	D101 (0-10V Dimming 1%)	27 (277V)	
		L1 (11W)	ED10V1 (eldoLED 0-10V 1%)		
		L2 (17W)	ED10V01 (eldoLED 0-10V 0.1%)		
			LUT (Lutron® LDE1 EcoSystem 1%)		

## Trim Assembly Part Number (Example: LD4DR309DG-SFW)

Trim	CCT/CRI	Finish
LD4DR (4" Downlight Round)	279 (2700K/90 CRI)	DG-SFW (Drop Lens / Self-Flanged White)
	309 (3000K/90 CRI)	
	359 (3500K/90 CRI)	
	409 (4000K/90 CRI)	

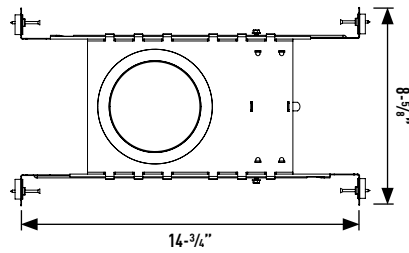
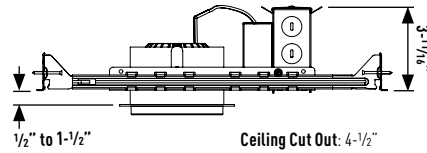
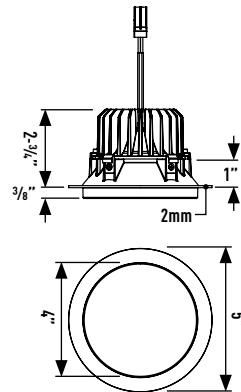
## Note:

1. L05 available w/ DIM only
2. Available in 120V only
3. EM7 not available w/ L05

# LD4 / LD4D-DG

4" Downlight w/ Drop Lens - Non-IC Flat Frame

JOB NAME		CATALOG NUMBER	
NOTES		TYPE	



0-10V DIMMING ELECTRICAL TABLE

Lumen Package	Voltage	Wattage	VA	Input Current	Power Factor
L05	120V	-	-	-	-
	277V	-	-	-	-
L0	120V	9.2W	9.85	0.08	0.93
	277V	10.28W	13.79	0.05	0.75
L1	120V	11.46W	11.90	0.10	0.96
	277V	12.59W	16.43	0.06	0.77
L2	120V	16.95W	17.36	0.14	0.98
	277V	18.28W	20.99	0.08	0.87

PHASE DIMMING ELECTRICAL TABLE

Lumen Package	Voltage	Wattage	VA	Input Current	Power Factor
L05	120V	5.07W	5.16	0.04	0.98
	277V	-	-	-	-
L0	120V	7.87W	7.92	0.07	0.99
	277V	9.32W	10.48	0.04	0.89
L1	120V	10.74W	10.81	0.09	0.99
	277V	11.9W	12.9	0.05	0.92
L2	120V	16.93W	17.26	0.14	0.98
	277V	17.77W	19.15	0.07	0.93

# LD4 / LD4D-DG

4" Downlight w/ Drop Lens - Non-IC Flat Frame

JOB NAME		CATALOG NUMBER	
NOTES		TYPE	

## LC4L2 / LD4DR309DG-SFW

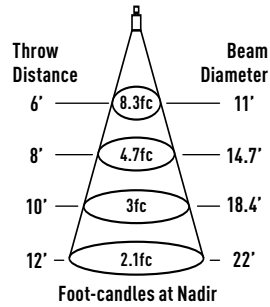
REPORT #: 20210312-1.002

### CCT MULTIPLIERS (90CRI):

2700K (x 1.00)  
 3000K (x 1.00)  
 3500K (x 1.00)  
 4000K (x 1.00)

### TRIM FINISH MULTIPLIERS:

White (x 1.00)  
 Black (x 0.85)  
 Satin Nickel (x 0.91)



Watts: 8 LPW: 75  
 Lumens: 600 CCT: 3000K

Intensity	
Degree	CBCP
0°	299
5°	296
15°	275
25°	240
35°	193
45°	131

## LC4L3 / LD4DR309DG-SFW

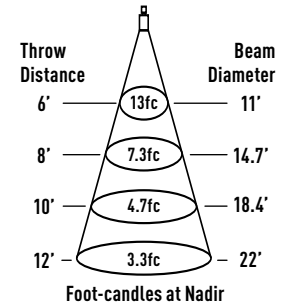
REPORT #: 20210312-1.001

### CCT MULTIPLIERS (90CRI):

2700K (x 1.00)  
 3000K (x 1.00)  
 3500K (x 1.00)  
 4000K (x 1.00)

### TRIM FINISH MULTIPLIERS:

White (x 1.00)  
 Black (x 0.85)  
 Satin Nickel (x 0.91)



Watts: 11 LPW: 81.8  
 Lumens: 900 CCT: 3000K

Intensity	
Degree	CBCP
0°	468
5°	464
15°	430
25°	377
35°	302
45°	206

## LC4L4 / LD4DR309DG-SFW

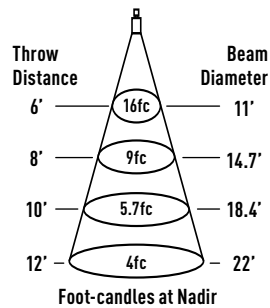
REPORT #: 20210312-1.003

### CCT MULTIPLIERS (90CRI):

2700K (x 1.00)  
 3000K (x 1.00)  
 3500K (x 1.00)  
 4000K (x 1.00)

### TRIM FINISH MULTIPLIERS:

White (x 1.00)  
 Black (x 0.85)  
 Satin Nickel (x 0.91)



Watts: 14 LPW: 82.14  
 Lumens: 1150 CCT: 3000K

Intensity	
Degree	CBCP
0°	575
5°	570
15°	528
25°	462
35°	371
45°	253